

Contactless Hall-IC Angle Sensor

MIDORI CP-45H-S Series



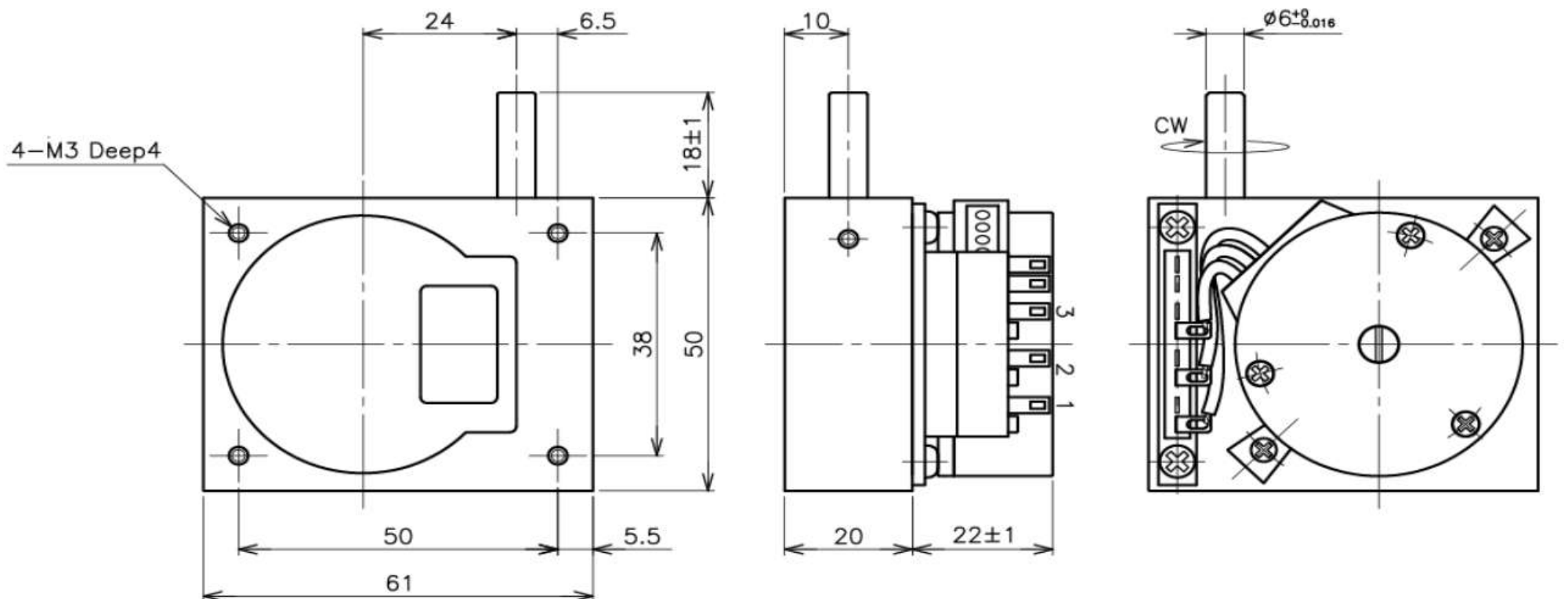
General

- Contactless Hall-IC Multi-turn Angle Sensor
- Effective Electrical Travel :3500° (CP-45H-10S)
: 35000° (CP-45H-100S)
- Absolute Linearity: $\pm 0.4\%FS$

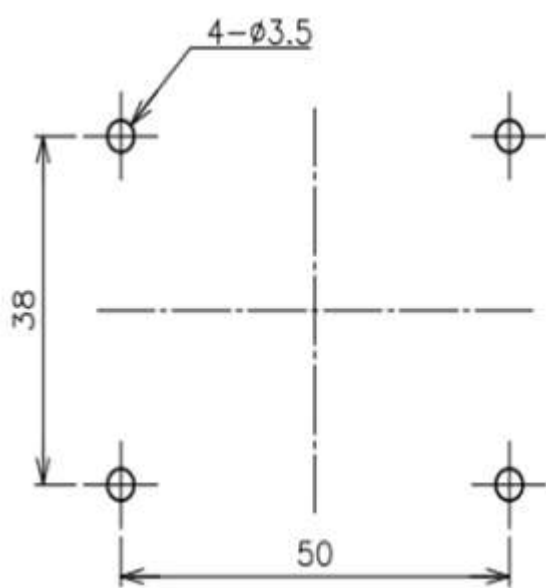
Material

- Housing: Aluminum
- Shaft: Stainless Steel
- Ball Bearing: Stainless Steel
- Gear Box: Aluminum die-casting

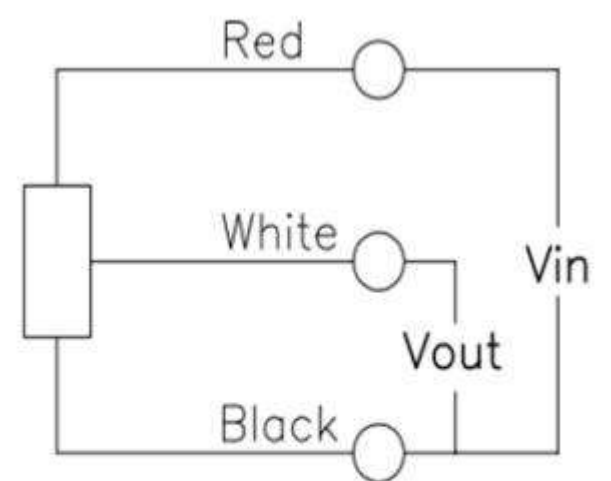
Dimension (mm)



Mounting(mm)

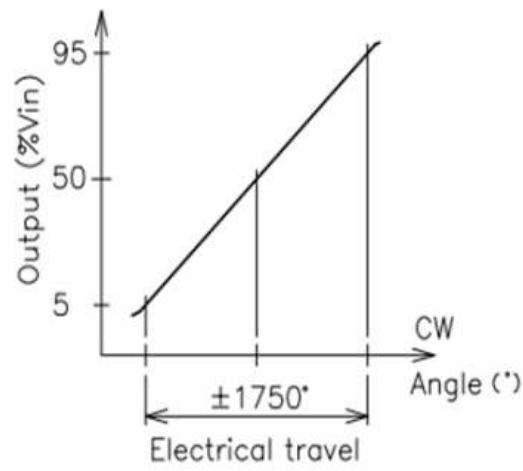


Schematic



- Red, White, Black indicate harness colors.

Output Characteristics



Specifications

	CP-45H-10S	CP-45H-100S
	Gear Ratio 10:1 (10-Turn)	Gear Ratio 100:1 (100-Turn)
Electrical Specifications		
Effective Electrical Travel	3500°	35000°
Output Range	5~95%Vin	
Absolute Linearity	±0.4%FS	
Input Voltage	DC5V ±0.5V	
Load Resistance	10KΩ MIN.	
Supply Current	10mA MAX.	
Output Resolution	1° MAX. (4000rpm MAX.)	
Temp. Characteristics -40~+100°C Reference Temp: 25°C	±0.3% FS	
Mechanical Specifications		
Total Mechanical Travel	Endless	
Running Torque	4mN · m MAX.	
Thrust Load Tolerance	5N	
Radial Load Tolerance	16N	
Weight	Approx. 280g	
Environmental Specifications		
EMS(IEC61000-4-2)	100V/m, 1M~1GHz	
Category Temp. Range	-40~+100°C	
Storage Temp. Range	-40~+100°C	
ESD (Case to Each Terminal)	±15KV (IEC61000-4-2)	
ESD (Between Each Terminal)	±15KV (IEC61000-4-2)	
IP Level	IP40	

Options

Gear Ratio: 12:1 (12-Turn), 24:1 (24-Turn), 35:1 (35-Turn)

Handling Instruction

- Do not use Hall-IC sensor as a variable resistor,
- This product may be influenced from external magnetic field.
- Use this sensor in the place where is protected form ESD.